

Clarifying Roles and Responsibilities for Sea Level Rise Adaptation to Secure and Manage Funding



**ASSOCIATION
OF BAY AREA
GOVERNMENTS**

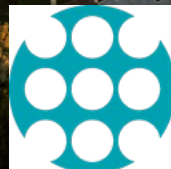


BARC Governing Board

December 8, 2023



**METROPOLITAN
TRANSPORTATION
COMMISSION**



**Bay Area
Regional
Collaborative**

What's at Risk if We Don't Adapt?

75,000
total households,
including 12,000 in the
most socially vulnerable
communities.

200,000
total jobs,
and 15,000 total
businesses.

20,000
shoreline acres at risk,
including wetlands,
lagoons, and tidal
marshes.³

transportation
corridors
in all nine counties,
including main highway
corridors and regional transit
systems

Note: Impacts are with 4.9' of sea level rise.

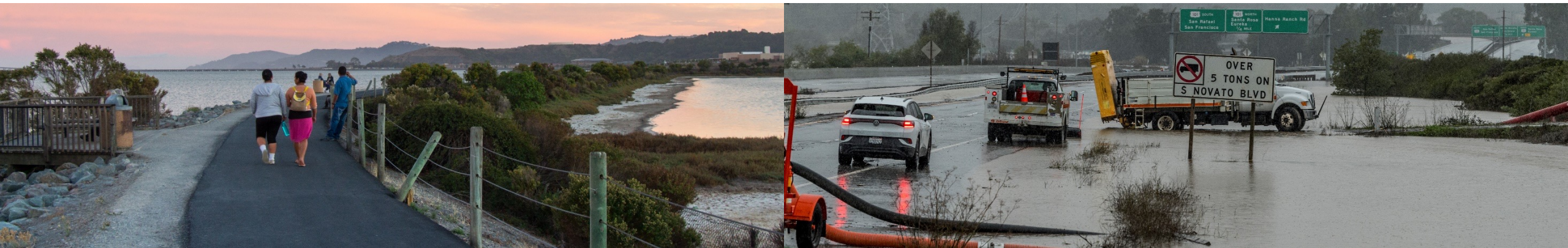


Photo credits: Ben Botkin (left); Karl Nielsen (right)

Adaptation Needs

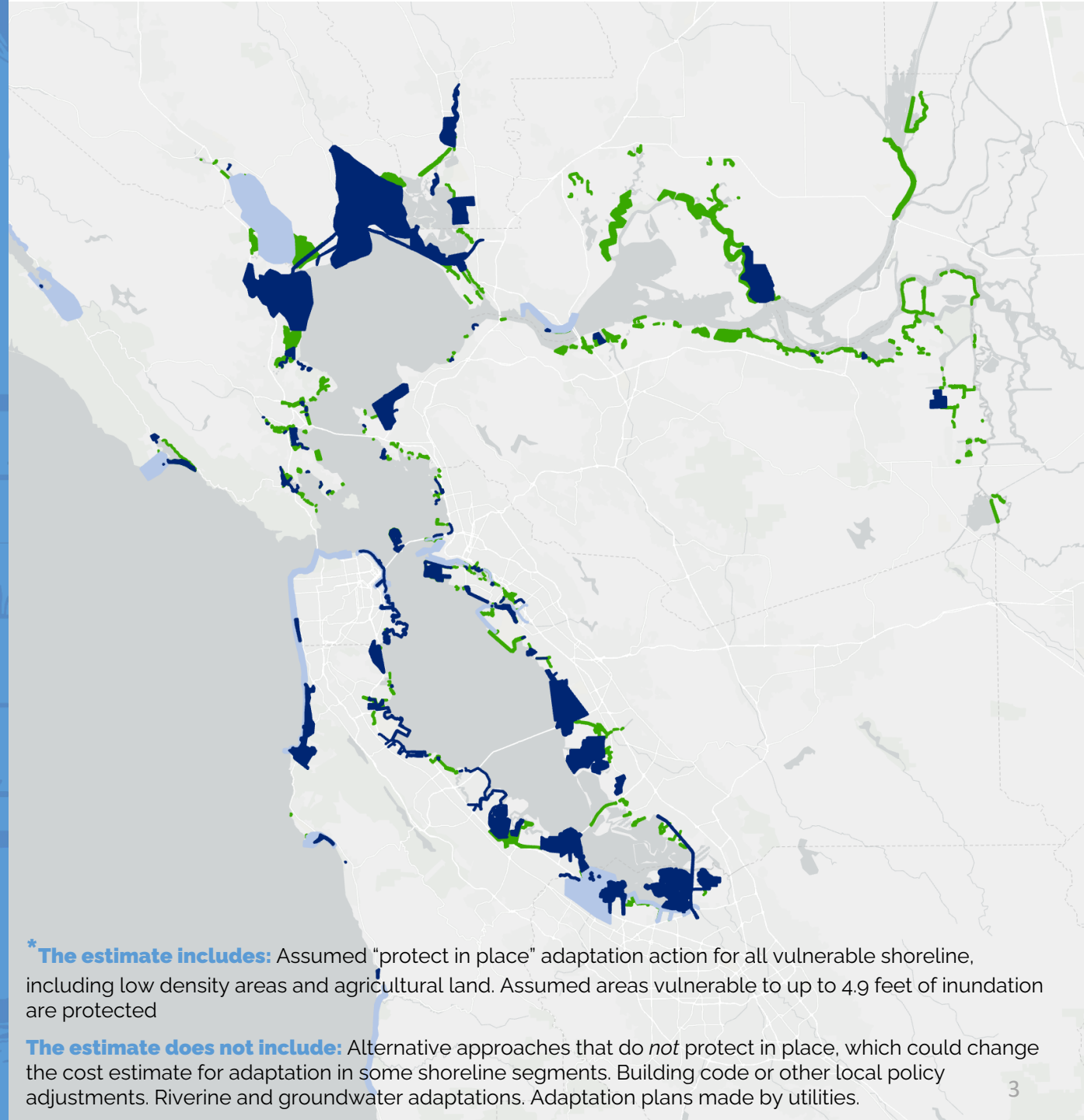
What is the regional estimate to fund adaptation?

\$110 billion*

Estimated cost of sea level rise adaptation through 2050 (in Year of Expenditure dollars)

What is the regional estimate of inaction?

\$231 billion



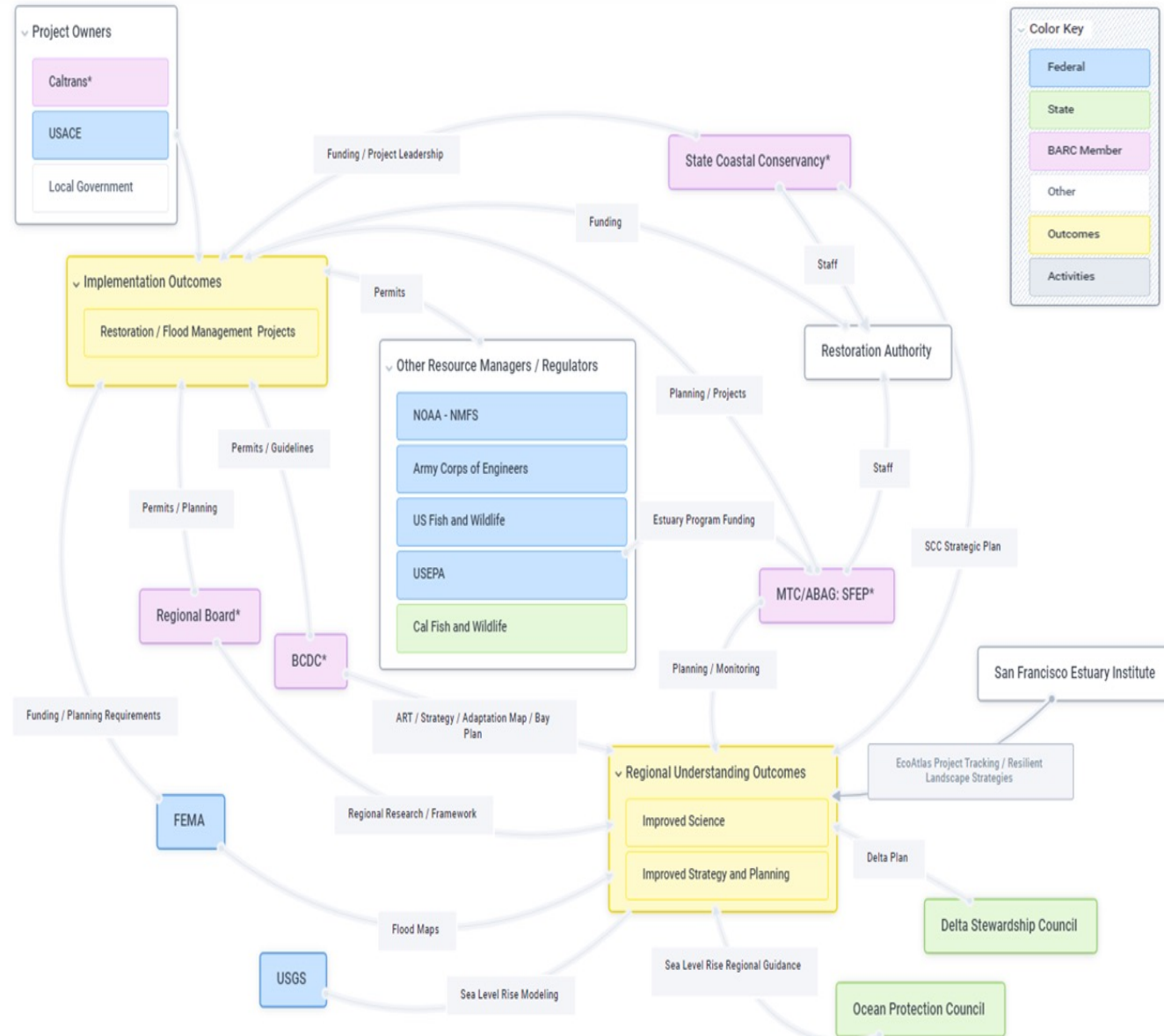
***The estimate includes:** Assumed "protect in place" adaptation action for all vulnerable shoreline, including low density areas and agricultural land. Assumed areas vulnerable to up to 4.9 feet of inundation are protected

The estimate does not include: Alternative approaches that do *not* protect in place, which could change the cost estimate for adaptation in some shoreline segments. Building code or other local policy adjustments. Riverine and groundwater adaptations. Adaptation plans made by utilities.

Creating Clarity in Complexity

Wealth of agencies collaborating in an informal system of programs, policies, planning, funding and regulatory activities to support **Nature Based Strategies**

- No agencies similarly engaged to support **grey or hybrid** infrastructure where its needed.
- An **array of project types** along the Bay shoreline are needed to manage sea level rise, from green to grey and hybrid.
- Opportunity to create a regional-scale **enabling environment** for advancing best projects along the entire shoreline. Planning + Regulatory + Funding
- Greater clarity on roles & responsibilities of different agencies will help position Bay Area for major **Federal and State Funding**.



System Map for Nature Based Strategies

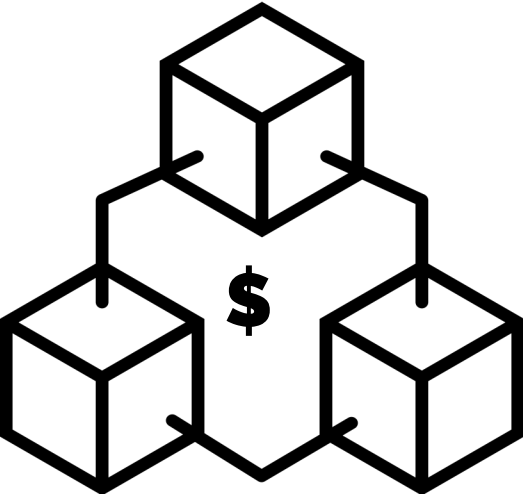
Regional Efforts Call Out Need to Identify Fund Manager

Bay Adapt Funding and Governance Action, Task 6.2: Establish a Framework for Funding Plans and Projects

Develop a Revenue Generation and Distribution Plan

At a regional level, establish or designate a governance structure to develop and implement the Revenue Generation and Distribution Plan and allocate funding. This entity or structure should have the following qualities:

- Technical capabilities to evaluate SLR, planning, environmental, and financial issues
- Regional governance structure (i.e, has reach and representation throughout the 9-county Bay Area)
- Ability to receive, raise, and distribute regional funding



BCDC/MTC/ABAG Sea Level Rise Adaptation Funding & Investment Framework

Next Step: Better define lead agency roles for SLR funding efforts in the Bay Area

While tackling SLR requires robust partnerships, the lack of a lead agency to secure additional funding and distribute it equitably hinders the Bay Area's ability to mitigate climate impacts

Agency Roles and Authorities

(From Accompanying Memo)

Agency	Financial Manager	Granting Agency	Project Delivery	Planning	Regulatory
ABAG		✓		✓	
BCDC				✓	✓
CA State Coastal Conservancy	✓	✓	✓	✓	
MTC	✓	✓	✓	✓	
SFBRA	✓	✓			
SFBRWQCB		✓			✓

Formalizing Roles for Regional Sea Level Rise & Coastal Flooding Management System



1. **Position Lead Agency/Agencies in securing, distributing, & managing funds** – Select primary contact(s) for Federal and State Agencies delivering major grants and appropriations.
2. **Project Prioritization/Decision-making:** Create collaborative process to determine project funding decisions
3. **Regional planning** – Ensure alignment of regional planning efforts to advance similar values, goals, priorities, and guidance
4. **Technical Assistance** – Work together to support capacity building and project delivery in priority locations

Recommendation: *MOU that outlines lead roles and responsibilities*

- | | |
|----------------------------|---|
| Oct - Nov 2023 | Select staff and board members to participate in process. |
| Dec 2023 – Feb 2024 | Draft MOU with lead and supporting agency roles, responsibilities |
| March 2024 | Draft circulated to individual agency commissions and boards for discussion/approval. |

Discussion Questions in Considering Development of MOU

- Is there agreement /concern with characterization of issues?
- What are outstanding questions?
- **Should the MOU be narrow or broad in focus?**
 - Focus primarily on Fund Manager, Grantmaking Roles?
 - Expand to include planning, regulatory, etc.?