

Introduction

This guide explains how the public and interested stakeholders can get involved in the San Francisco Bay Area's transportation project development process. Specifically, the focus is on the Transportation Improvement Program or TIP, which is compiled and approved by the Metropolitan Transportation Commission. A major milestone occurs when a highway, transit or other transportation project is added to the TIP. A project may not receive federal funds or receive other critical federal project approvals unless it is included in the TIP. This guide focuses on the TIP – what it is and how the public can use it to keep informed about projects in their communities.

Table of Contents

- 2** What is the Metropolitan Transportation Commission?
- 3** What is the Transportation Improvement Program or TIP?
- 5** A summary of the 2015 TIP
- 8** How does the TIP relate to the long-range regional transportation plan?
- 9** How does the TIP relate to the Clean Air Act?
 - 9** How is the TIP funded?
 - 10** Who develops the TIP?
- 11** How does a project get in the TIP?
- 14** What happens after a project is included in the TIP?
- 15** In what ways can the public participate?
- 16** Where to turn for more information
- 18** Transportation agencies in the San Francisco Bay Area



What is the Metropolitan Transportation Commission?

The Metropolitan Transportation Commission (MTC) was created by the California State Legislature in 1970 and is the transportation planning, coordinating and financing agency for the nine-county San Francisco Bay Area. MTC functions as both the region's metropolitan planning organization (MPO) – a federal designation – and, for state purposes, as the regional transportation planning agency. As such, it is responsible for regularly updating the Regional Transportation Plan (RTP), a comprehensive blueprint for the development of mass

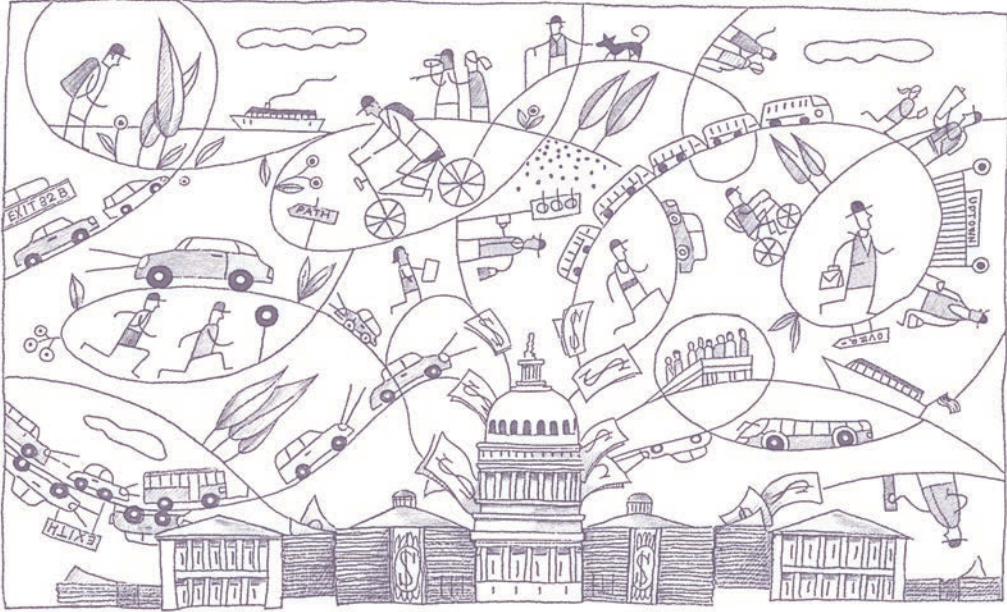


transit, highway, local streets and roads, rail, bicycle and pedestrian facilities. The RTP includes a Sustainable Communities Strategy (SCS) that integrates planning for transportation, land use and housing. The Commission screens requests from local agencies for regional, state and federal grants for transportation projects to determine their compatibility with the RTP, and coordinates the participation of governments and the general public in the planning process. MTC also functions as the Bay Area Toll Authority and the Service Authority for Freeways and Expressways.

The San Francisco Bay Area is served by seven primary public transit systems as well as over 20 other local transit operators, which together carry over 500 million passengers per year. There are nearly 20,000 miles of local streets and roads, 1,400 miles of highway, six public ports and three major commercial airports. The region includes nine counties and 101 municipalities; more than 7 million people reside within its 7,000 square miles.

The Commission is governed by a 21-member policy board. Sixteen commissioners are appointed directly by local elected officials. In addition, two members represent regional agencies – the Association of Bay Area Governments and the Bay Conservation and Development Commission. Finally, three nonvoting members represent the U.S. Department of Transportation, the California State Transportation Agency and the U.S. Department of Housing and Urban Development.





What is the Transportation Improvement Program or TIP?

The TIP lists the near-term transportation projects, programs and investment priorities of the region's surface transportation system that have a federal interest – meaning projects or programs for which federal funds or actions by federal agencies are anticipated – along with locally and state-funded projects that are regionally significant. A regionally significant project, generally large scale, changes travel patterns over a relatively large geographic area. The TIP signifies the start of implementation of the programs and policies approved in the Bay Area's long-range transportation plan. It does this by identifying specific projects over a four-year timeframe that will help move the region toward its transportation vision. Locally funded transit operations and pavement maintenance are generally not included in the TIP.

The TIP is multimodal.

The TIP lists highway, local roadway, bridge, public transit, bicycle, pedestrian and freight-related projects.

The TIP covers a four-year period.

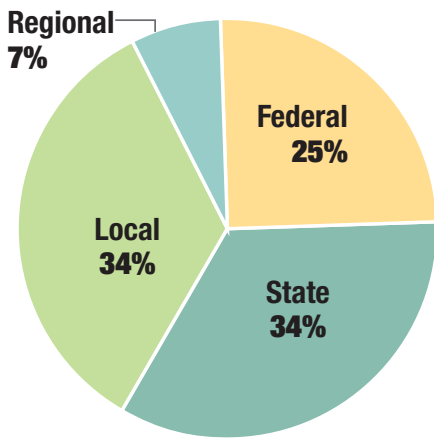
The TIP lists projects for a period of four years. MTC is required by federal law to update the TIP at least one time every four years.



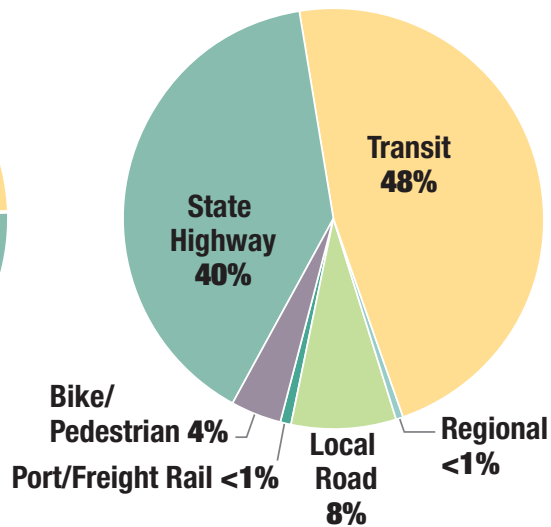
A summary of the 2015 TIP

The Bay Area's 2015 TIP includes approximately 1,000 transportation projects, and a total of approximately \$9.5 billion in committed federal, state and local funding over the four-year TIP period through fiscal year 2018. See the next page for a map of projects with costs greater than \$200 million.

2015 TIP Funds by Source



2015 TIP Funds by Mode



2015 TIP Investment Analysis: Focus on low-income and minority communities

To address the equity implications of the proposed 2015 TIP investments, MTC has conducted an investment analysis with a focus on minority and low-income residents. The key question addressed is: "Are low-income and minority populations sharing equitably in the TIP's financial investments?" To answer this question, the investment analysis uses demographic criteria to calculate the shares of 2015 TIP investments that will flow to the identified communities, and compares those shares with the proportional size of this group's population and trip-making, relative to those of the general population.

Results of the Investment Analysis of the 2015 TIP can be viewed on MTC's web site at: www.mtc.ca.gov/funding/tip/



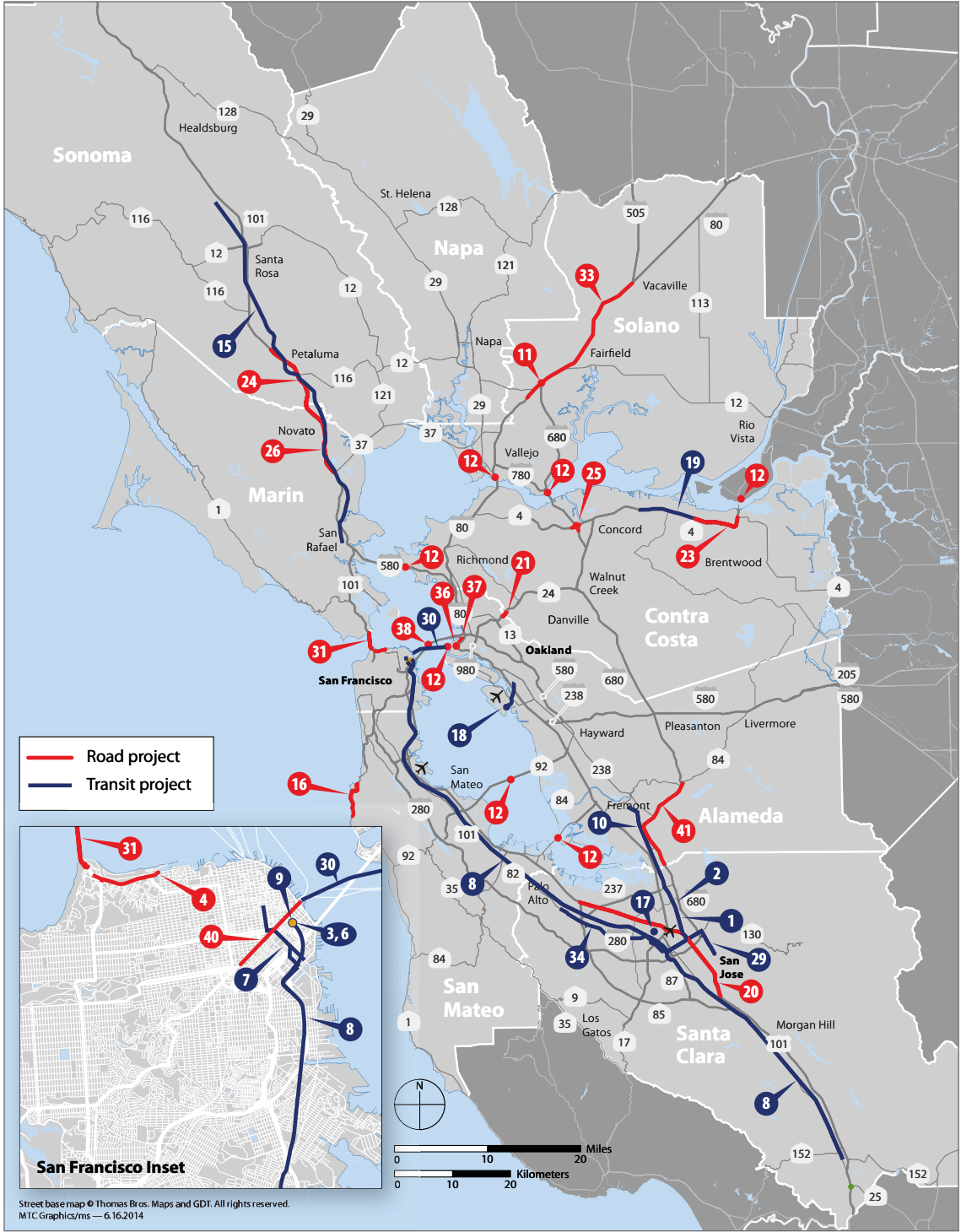
Projects in the 2015 TIP With Costs Greater Than \$200 million

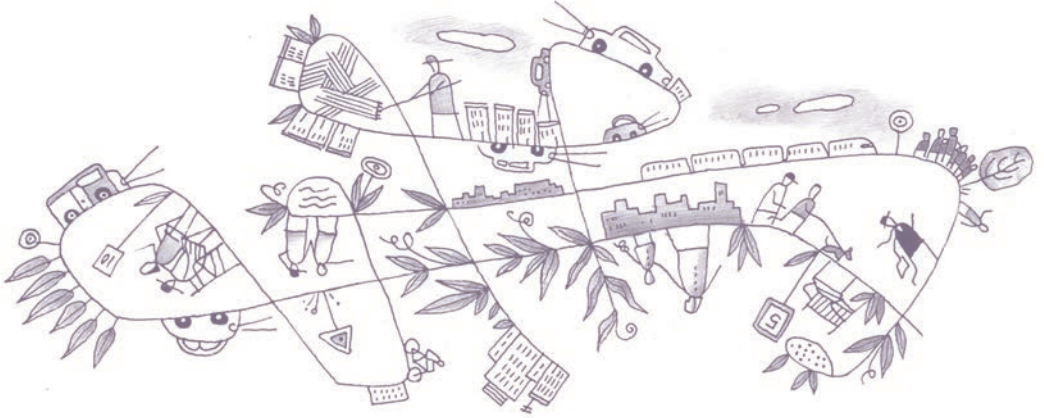
RED Road Project
BLUE Transit Project

- 1.** **BART – Berryessa to San Jose Extension**
Santa Clara County
\$3.96 billion
- 2.** **BART – Warm Springs to Berryessa Extension**
Santa Clara County
\$2.52 billion
- 3.** **Transbay Terminal/Caltrain Downtown Extension, Phase 2**
San Francisco County
\$2.29 billion
- 4.** **US 101 Doyle Drive Replacement**
San Francisco County
\$1.99 billion
- 5.** **BART Railcar Procurement Program****
Multiple Counties
\$1.98 billion
- 6.** **Transbay Terminal/Caltrain Downtown Extension, Phase 1**
San Francisco County
\$1.90 billion
- 7.** **SF Muni Third St LRT Phase 2 – Central Subway**
San Francisco County
\$1.58 billion
- 8.** **Caltrain Electrification**
Multiple Counties
\$1.23 billion
- 9.** **Transbay Transit Center – TIFIA Loan Debt Service**
San Francisco County
\$1.08 billion
- 10.** **BART – Warm Springs Extension**
Alameda County
\$890 million
- 11.** **I-80/I-680/SR-12 Interchange**
Solano County
\$718 million
- 12.** **Toll Bridge Rehabilitation Program**
Multiple Counties
\$629 million
- 13.** **BART Car Exchange (Preventive Maintenance)****
Multiple Counties
\$607 million
- 14.** **Valley Transportation Authority: Preventive Maintenance**
Santa Clara County
\$572 million
- 15.** **Sonoma Marin Area Rail Corridor**
Sonoma/Marin Counties
\$539 million
- 16.** **SR-1 Devils Slide Bypass**
San Mateo County
\$512 million
- 17.** **San Jose International Airport People Mover**
Santa Clara County
\$508 million
- 18.** **BART Oakland Airport Connector**
Alameda County
\$484 million
- 19.** **E-BART – East Contra Costa County Rail Extension**
Contra Costa County
\$460 million
- 20.** **US-101 Express Lanes in Santa Clara County**
Santa Clara County
\$425 million
- 21.** **SR-24 – Caldecott Tunnel Fourth Bore**
Alameda/Contra Costa Counties
\$420 million
- 22.** **AC Transit: Preventive Maintenance Program****
Alameda/Contra Costa Counties
\$392 million
- 23.** **SR-4 East Widening from Somersville to SR-160**
Contra Costa County
\$385 million
- 24.** **US-101 Marin–Sonoma Narrows (Sonoma)**
Sonoma County
\$373 million
- 25.** **I-680/SR-4 Interechange Reconstruction – Ph. 1, 2, 4 & 5**
Contra Costa County
\$369 million
- 26.** **US-101 Marin-Sonoma Narrows (Marin)**
Marin County
\$351 million
- 27.** **Hunters Point Shipyard and Candlestick Point Local Roads****
San Francisco County
\$338 million
- 28.** **Freeway Performance Initiative (FPI)****
Multiple Counties
\$336 million
- 29.** **Capitol Expressway LRT Extension, Phase 2**
Santa Clara County
\$294 million
- 30.** **BART Transbay Tube Seismic Retrofit**
Multiple Counties
\$276 million
- 31.** **Golden Gate Bridge Seismic Retrofit, Phases 1–3A**
Marin/San Francisco Counties
\$273 million
- 32.** **Southeast Waterfront Transportation Improvements****
San Francisco County
\$254 million
- 33.** **I-80 Express Lanes in Fairfield & Vacaville, Phases 1 & 2**
Solano County
\$237 million
- 34.** **El Camino Real Bus Rapid Transit**
Santa Clara County
\$234 million
- 35.** **Caltrain Positive Train Control System****
Multiple Counties
\$231 million
- 36.** **7th Street Grade Separation and Roadway Improvements**
Alameda County
\$221 million
- 37.** **Oakland Army Base Infrastructure Improvements**
Alameda County
\$215 million
- 38.** **Yerba Buena Island (YBI) Ramp Improvements**
San Francisco County
\$212 million
- 39.** **SFMTA ADA Paratransit Operating Support****
San Francisco County
\$207 million
- 40.** **SF-Better Market Street Transportation Elements**
San Francisco County
\$206 million
- 41.** **I-680 NB HOV/HOT Lane**
Alameda/Santa Clara Counties
\$205 million

** These projects not shown on map

Projects in the 2015 TIP With Costs Greater Than \$200 million





How does the TIP relate to the long-range regional transportation plan?

Regionally significant projects must be first identified in the long-range regional transportation plan (RTP), and projects in the TIP must help implement the goals of the plan. This long-range plan is required by federal law and is a blueprint for transportation investment decisions over a 25- to 30-year horizon. The current plan is titled “Plan Bay Area.” The RTP establishes policies and priorities to address mobility, congestion, air quality and other transportation goals. The 2015 TIP translates recommendations from the RTP into a short-term (four-year) program of improvements focused on projects that have a federal interest. Therefore, the earlier (and more effective) timeframe for public comment on the merits of a particular transportation project is during the development of the long-range RTP.





Who develops the TIP?

MTC develops the TIP in cooperation with the Bay Area Partnership of federal, state and regional agencies; county congestion management agencies (CMAs); public transit providers; city and county public works representatives; and the public. The Bay Area Partnership subcommittees provide a forum for managers of the region's transportation system to contribute to the policy-making and investment activities of MTC, and to improve coordination within the region.

Project sponsors must be a government agency (or other qualifying entity, such as certain non-profit organizations that are eligible for some transportation funds) and are responsible for initiating funding requests, applying for funds, and carrying their projects to completion. In the Bay Area, project sponsors include public transit operators, Caltrans, MTC, the Bay Area Air Quality Management District, the county congestion management agencies, the nine Bay Area counties, the individual cities within each county or other special districts.



How does a project get in the TIP?

Often years of planning and public input precede a project's inclusion in the TIP. Although there are several ways in which a project can get in the TIP, the most typical course is described here. *The chart on the next page shows where the TIP lies on the path to completion of a project.*

First, a particular transportation need is identified. In many cases, planners and engineers generate lists of potential improvements based on their needs analyses and public inquiries. The local proposals are in turn reviewed by a city, county, transportation authority, transit operator, or state agency. If the public agency agrees that a particular idea has merit, it may decide to act as the project sponsor, work toward refining the initial idea, develop a clear project cost, scope and schedule, and subsequently seek funding for the project.

Once local agencies develop their list of projects and priorities, they are submitted to MTC for consideration to include in the regional transportation plan. Even if a project is fully funded with local funds, if it is a major project it must still align with the regional plan's goals in order to be included in the plan. Many project sponsors will request funding for their projects that is subject to MTC approval. MTC must balance competing needs and assure that the most critical investment priorities are being addressed within the limits of available funds and that there is consistency among projects and with the region's goals as embodied by the regional transportation plan.

When federal and state discretionary funding becomes available to the region, MTC, guided by the long-range plan in consultation with transportation stakeholders, develops a transportation program for those funds. This involves deciding on criteria for project selection and setting funding levels per project. Depending on the program, projects may be proposed by either MTC, the Bay Area Air Quality Management District, or a county congestion management agency, transit operator, city, county or special district.



Follow a Transportation Project From Idea to

New Project Ideas and Local Review

MTC's Long-Term Regional Transportation Plan

Idea

An idea for a project starts when a transportation need is identified and a new idea is put forward. The idea can surface in any number of ways – from you, a private business, a community group or a government agency.

Local Review

The project idea must be adopted by a formal sponsor – usually a public agency – that may refine the initial idea and develop details for the project. To move forward, the project must be approved by local authorities such as a city council, county board of supervisors or transit agency.

To be eligible for certain regional, state and federal funds, projects must be cleared through the county congestion management agency (CMA), and become part of the Regional Transportation Plan.

The Regional Transportation Plan (RTP)/ Sustainable Communities Strategy (SCS)

Every four years MTC updates the Regional Transportation Plan (RTP), looking forward two to three decades. The plan identifies policies, programs and transportation investments to support the long-term vision for the Bay Area.

The RTP also must identify anticipated funding sources. The RTP can include only those projects and programs that can be funded with revenues reasonably expected to be available during the plan's timeframe. Projects identified in the RTP are generally drawn from the planning efforts of MTC, Association of Bay Area Governments (ABAG), county congestion management agencies, transit agencies and local governments.

State legislation now requires that regional transportation plans incorporate a Sustainable Communities Strategy (SCS) – provisions for reducing greenhouse gas emissions from cars and light trucks by integrating transportation, housing and land-use planning.

How You Can Make a Difference

Get involved in your community!

- ▶ Follow the work of your city council, county board of supervisors or local transit agency.
- ▶ Take notice of plans or improvement programs developed by your city, county or transit agency.
- ▶ Comment on projects proposed by your county CMA or on transportation improvements submitted to MTC for regional, state or federal funding.
- ▶ See page 18 for a list of transportation agencies.

The Regional Transportation Plan is the earliest and best opportunity within the MTC process to comment on and influence projects. A project cannot move forward or receive any federal funds unless it is included in the RTP. MTC support of large projects occurs in the long-range plan and not as part of the TIP.

- ▶ Attend public meetings or open houses to learn about plans and offer your comments
- ▶ Participate in online surveys or forums

Implementation

MTC's Project Selection Process

Construction/Implementation

Once long-term goals, policies and funding initiatives have been set in the RTP, MTC develops program criteria and funds specific projects.

Project Selection Process

Funding Levels Established for RTP Programs/Initiatives: Guided by the RTP and short-term revenue estimates, MTC decides how much funding to apply to programs over a two-to-four-year period at a time.

Project Selection Criteria Developed: For competitive programs under its control, MTC is guided by the RTP and develops and adopts minimum project requirements and criteria to evaluate and prioritize projects.

Project Selection: Depending on the program, projects may be selected using MTC's criteria or by the county congestion management agency, the California Transportation Commission or a transit agency board. Some funding programs are non-competitive, meaning projects are funded according to a pre-determined formula or voter-enacted initiative.

The Transportation Improvement Program (TIP)

The production of the Transportation Improvement Program or TIP is the culmination of MTC's transportation planning and project selection process. The TIP identifies specific near-term projects over a four-year period to move the region toward its transportation vision.

The TIP lists all surface transportation projects for which federal funds or actions by federal agencies are anticipated, along with some of the larger locally and state-funded projects. A project cannot receive federal funds or receive other critical federal project approvals unless it is in the TIP. MTC must update the TIP at least once every four years. It is revised several times a year to add, delete or modify projects.

Environmental Review and Project Development Activities

The project sponsor conducts an environmental review, as required by either the California Environmental Quality Act (CEQA) or the National Environmental Policy Act (NEPA). Final approval of the project design and right-of-way is required by the sponsoring agency and appropriate federal agency (Federal Highway Administration or Federal Transit Administration) if federal funds and/or actions are involved.

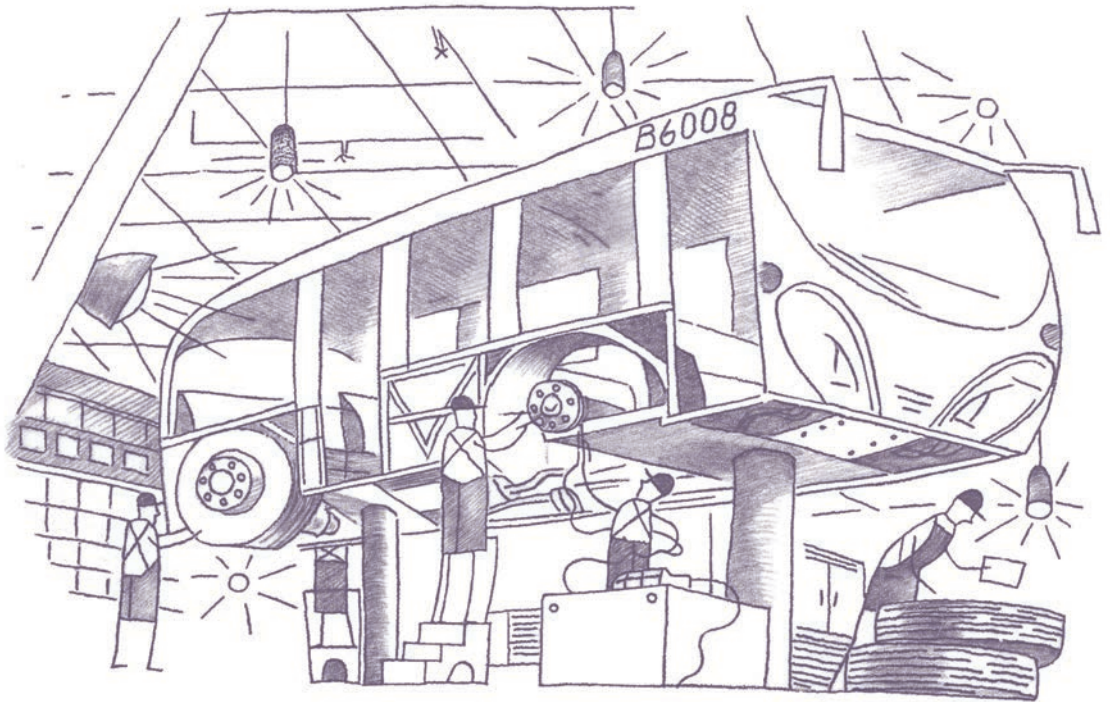
Funding is fully committed by grant approval once the project meets all requirements and moves forward to phases such as preliminary engineering, final design, right-of-way acquisition, or construction.

Get involved in planning for the whole Bay Area at MTC!

- ▶ Comment at MTC committee-level and Commission-level meetings, special public hearings and workshops.
- ▶ Follow the work of MTC's Policy Advisory Council which advises the Commission (www.mtc.ca.gov/get_involved).
- ▶ Check MTC's website for committee agendas and to keep current on activities (www.mtc.ca.gov).
- ▶ Get your name added to MTC's database to receive e-mail updates (info@mtc.ca.gov).

Comment on a project's impacts

- ▶ Comment on the environmental impacts of the project before the environmental document and project receive final approval by the board of the sponsoring agency, or in advance of federal approval, if required.



What happens after a project is included in the TIP?

Once a project is in the TIP, a considerable amount of work still remains to bring it to completion. The designated project sponsor is responsible for ensuring the project moves forward. Projects typically proceed in phases (preliminary engineering, final design, right-of-way acquisition, and construction). Each phase is included in the TIP showing funding and the anticipated schedule. Ideally, a project will advance according to its listed schedule. However, tracking each project's progress is important so that delays can be identified and remedied as soon as possible, and so that funding can be reallocated as necessary.

Once federal funds have been made available for a project's final construction phase, they usually no longer appear in future TIP documents – even though the project may not yet be completed.



In what ways can the public participate?

Public participation occurs during all stages of a project's development. Communicating support or concern to municipal and county officials and transit agency managers is one of the most effective starting points. As local review begins, public input may be provided at formal meetings or informal sessions with local planning boards and staff. Members of the public may also be asked to participate in special task forces to review transportation improvement concepts at the corridor, county and regional level. The MTC's long-range regional transportation plan has an extensive public involvement program including but not limited to workshops, focus groups, surveys, public hearings and opportunities to comment at Commission meetings. Finally, once a project is in the TIP and it enters the preliminary engineering phase, the detailed environmental review process affords yet another opportunity for the public to offer input. An overview of opportunities to get involved during every stage of a project is provided on pages 12 and 13.

MTC's public involvement process aims to give the public ample opportunities for early and continuing participation in transportation project planning, and to provide full public access to key decisions. The public has the opportunity to comment before the TIP is officially adopted by the Commission. MTC conducts a public comment period and holds public meetings to allow the public an opportunity to ask questions about the process and projects. Copies of the TIP are distributed to major libraries; notices are mailed out to an extensive mailing list of interested individuals and agencies along with instructions on how to access and comment on the TIP on the MTC website; and the TIP documents can be viewed on the MTC website at www.mtc.ca.gov/funding/tip/.

MTC extends an open and continuing invitation to the Bay Area public to assist in developing transportation solutions for the region. A comprehensive Public Participation Plan details the many avenues available to groups and individuals who would like to get involved in MTC's work. The plan can be found on MTC's website at www.mtc.ca.gov/get_involved/participation_plan.htm.



Where to turn for more information

Visit the MTC website at www.mtc.ca.gov for more information about the transportation planning and funding process and to obtain schedules and agendas for MTC meetings. Below are direct links to key documents. Some publications mentioned are available at the MTC-ABAG Library.

Resources

The Transportation Improvement Program

www.mtc.ca.gov/funding/tip/

MTC Public Participation Plan

www.mtc.ca.gov/get_involved/participation_plan.htm

The ABCs of MTC

www.mtc.ca.gov/library/abcs_of_mtc/

Project Listing: MTC Fund Management System

www.mtc.ca.gov/funding/fms_intro.htm

MTC Staff Contacts

Program and Fund Management

Ross McKeown (510) 817-5842
rmckeown@mtc.ca.gov

Transportation Improvement Program

Adam Crenshaw (510) 817-5794
acrenshaw@mtc.ca.gov

Federal Highway Administration Programs

Craig Goldblatt (510) 817-5837
cgoldblatt@mtc.ca.gov

Federal Transit Administration Programs

Glen Tepke (510) 817-5781
gtepke@mtc.ca.gov

State Funding Programs

Kenneth Kao (510) 817-5768
kkao@mtc.ca.gov

MTC Public Information

(510) 817-5757 or info@mtc.ca.gov

MTC-ABAG Library

(510) 817-5836 or library@mtc.ca.gov



Transportation agencies in the San Francisco Bay Area

Major Transit Operators

Altamont Commuter Express (ACE)

209.944.6220

Alameda-Contra Costa Transit District (AC Transit)

510.891.4777

Bay Area Rapid Transit District (BART)

510.464.6000

Bay Area Water Emergency Transit Authority

415.291.3377

Central Contra Costa Transit Authority (County Connection)

925.676.1976

Eastern Contra Costa Transit Authority (Tri Delta)

925.754.6622

Fairfield/Suisun Transit (FAST)

707.422.2877

Golden Gate Bridge, Highway and Transportation District

415.921.5858

Livermore Amador Valley Transit Authority (WHEELS)

925.455.7500

Marin County Transit District

415.226.0855

Napa County Transportation and Planning Agency (VINE)

707.259.8631

Peninsula Corridor Joint Powers Board (Caltrain)

650.508.6200

San Francisco Municipal Transportation Agency (SFMTA)

415.701.4500

San Mateo County Transit District (SamTrans)

650.508.6200

Santa Clara Valley Transportation Authority (VTA)

408.321.2300

Santa Rosa Department of Transit and Parking

707.543.3333

Solano County Transit (SolTrans)

707.648.4666

Sonoma County Transit

707.585.7516

Transbay Joint Powers Authority

415.597.4620

Western Contra Costa Transit Authority (WestCAT)

510.724.3331

Major Airports and Seaports

Port of Oakland

510.627.1100

Port of San Francisco

415.274-0400

Oakland International Airport

510.563.3300

San Jose International Airport

408.392.3600

San Francisco International Airport

650.821.8211

Regional Agencies

Association of Bay Area Governments

510.464.7900

Bay Area Air Quality Management District

415.771.6000

Metropolitan Transportation Commission

510.817.5700

San Francisco Bay Conservation and Development Commission

415.352.3600

Congestion Management Agencies

Alameda County Transportation Commission

510.208.7400

Contra Costa Transportation Authority

925.256.4700

Transportation Authority of Marin

415.226.0815

Napa County Transportation and Planning Agency

707.259.8631

San Francisco County Transportation Authority

415.522.4800

City/County Association of Governments of San Mateo County

650.599.1406

Santa Clara Valley Transportation Authority

408.321.2300

Solano Transportation Authority

707.424.6075

Sonoma County Transportation Authority

707.565.5373

State Agencies

California Air Resources Board

916.322.2990

California Highway Patrol, Golden Gate Division

707.551.4180

California State Transportation Agency

916.323.5400

California Transportation Commission

916.654.4245

Caltrans, District 4

510.286.4444

Federal Agencies

Environmental Protection Agency, Region 9

415.947.8021

Federal Highway Administration, California Division

916.498.5001

Federal Transit Administration, Region 9

415.744.3133

Metropolitan Transportation Commission Roster

Amy Rein Worth, Chair

Cities of Contra Costa County

Dave Cortese, Vice Chair

Santa Clara County

Alicia Aguirre

Cities of San Mateo County

Tom Azumbrado

U.S. Department of Housing and Urban Development

Tom Bates

Cities of Alameda County

David Campos

City and County of San Francisco

Bill Dodd

Napa County and Cities

Dorene M. Giacopini

U.S. Department of Transportation

Federal D. Glover

Contra Costa County

Scott Haggerty

Alameda County

Anne W. Halsted

San Francisco Bay Conservation and Development Commission

Steve Kinsey

Marin County and Cities

Sam Liccardo

San Jose Mayor's Appointee

Mark Luce

Association of Bay Area Governments

Jake Mackenzie

Sonoma County and Cities

Joe Pirzynski

Cities of Santa Clara County

Jean Quan

Oakland Mayor's Appointee

Bijan Sartipi

California State Transportation Agency

James P. Spring

Solano County and Cities

Adrienne J. Tissier

San Mateo County

Scott Wiener

San Francisco Mayor's Appointee



Credits

Anne Richman

Director Programming and Allocations

Ross McKeown

Program Manager

Adam Crenshaw

Project Manager

Peg Yamada

Administrative Support

Craig Goldblatt

Author

Catalina Alvarado

Editor

Whitney Sherman

Illustrations

Michele Stone

Graphic Design and Production

Peter Beeler

Map Design

To order additional copies of this Guide to the TIP, email library@mtc.ca.gov or call 510.817.5836



Printed on
recycled paper



Metropolitan Transportation Commission

Joseph P. Bort MetroCenter
101 Eighth Street
Oakland, CA 94607-4700

TEL 510.817.5700

FAX 510.817.5848

TTY/TDD 510.817.5769

E-MAIL info@mtc.ca.gov

WEB www.mtc.ca.gov