

Complete Streets Safety Assessment Program

Afsaneh Yavari, T.E.

Research and Development Engineer
Safe Transportation Research and Education Center (SafeTREC)
University of California, Berkeley

February 03, 2020

Complete Streets Safety Assessment Program

Introduction:

- Complete Streets Safety Assessment (CSSA) free service for CA local agencies
- Since 1998, coordinated by the Tech Transfer Program of Institute of Transportation Studies at UC-Berkeley
- Since 2018, under Safe Transportation Research and Education Center (SafeTREC) at UC-Berkeley

Funding: Grant from the California Office of Traffic Safety (OTS)
Through National Highway Traffic Safety Administration (NHTSA)

Complete Streets Safety Assessment Program

- Traffic Safety Assessment (TSA), since 1998, 222 studies
- Pedestrian Safety Assessment (PSA), since 2007, 95 studies
- Bicycle Safety Assessment (BSA), since 2012, 16 studies
- Rural Safety Assessment (RSA), since 2013, 10 studies
- Complete Streets Safety Assessment (CSSA), since 2015, 44 studies

CSSA combines and replaces TSA, PSA, BSA

Complete Streets Safety Assessment Program

Objectives

- Improve safety for all travel modes, with emphasis on pedestrian and bicyclist
- Create safe, comfortable, accessible, welcoming environments for all road users
- Enhance economic vitality

Complete Streets Safety Assessment Program

Process

- Outreach to CA local communities (populations > 25,000)
- (starting next grant cycle, populations < 25,000)
- Receive applications from local agencies
- Approve local agencies, priority is based on:
 - OTS Ranking
 - Any previous safety studies done, and how long ago
 - Any specific needs
- Assign 2 traffic safety experts (engineer / planner)

Complete Streets Safety Assessment Program

Process (continued)

- Obtain collision data
- Conduct conference call with local agency staff
- Visit city for 1 day:
 - ❑ meet with city staff
 - ❑ walking audit
- Prepare technical report: findings and suggestions for improvement

Complete Streets Safety Assessment Program

CITY OF SUISUN CITY

COMPLETE STREETS SAFETY ASSESSMENT

Afsaneh Yavari

John Ciccarelli

September 2019



Complete Streets Safety Assessment Program

Suisun City CSSA

- Suisun City is located in Solano County
 - ❑ Population ~29,000 (2010 Census)
 - ❑ One of 94 cities in OTS Group D (population 25,001-50,000)
- Conference call with City staff – June 2019
- Meeting and walking audit with City staff - July 2019

Complete Streets Safety Assessment Program

Suisun City CSSA

Obtain collision data:

- Transportation Injury Mapping System (TIMS), by SafeTREC
- <https://tims.berkeley.edu/>
- Source of TIMS data is California Statewide Integrated Traffic Records System (SWITRS)
- In 5-year period: January 2014 through 2018
 - 229 collisions:
 - ❑ 31 involving pedestrians (3 fatal)
 - ❑ 12 involving Bicyclists (1 fatal)

Complete Streets Safety Assessment Program

Suisun City CSSA

Obtain other relevant data & documents:

- 2035 General Plan, adopted May 5, 2015
- Waterfront District Specific Plan, November 2016
- Safe Routes to School Program is under the Solano Transportation Authority (STA)
- Bikeways Map, Existing and Planned
- Solano Transportation Authority Countywide Pedestrian and Bicycle Master Plans
- City Capital Improvement Program (Draft), FY 2019-20 to 2013-24

Complete Streets Safety Assessment Program

Suisun City CSSA

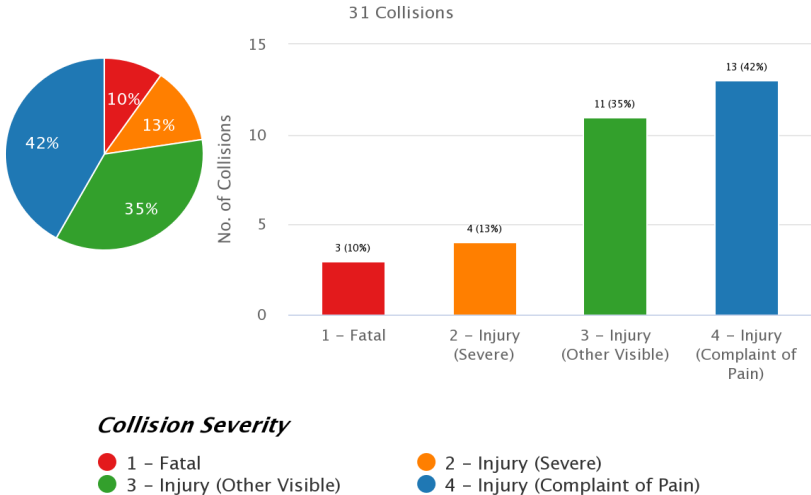
Number of Pedestrian Collisions by Collision Severity
(from TIMS)

5-year period:
January 2014 through 2018

31 Collisions:

- 3 (10%) Fatal
- 4 (13%) Severe Injury
- 11 (35%) Other Visible Injury
- 13 (42%) Complaint of Pain Injury

Number of Collisions by Collision Severity



Complete Streets Safety Assessment Program

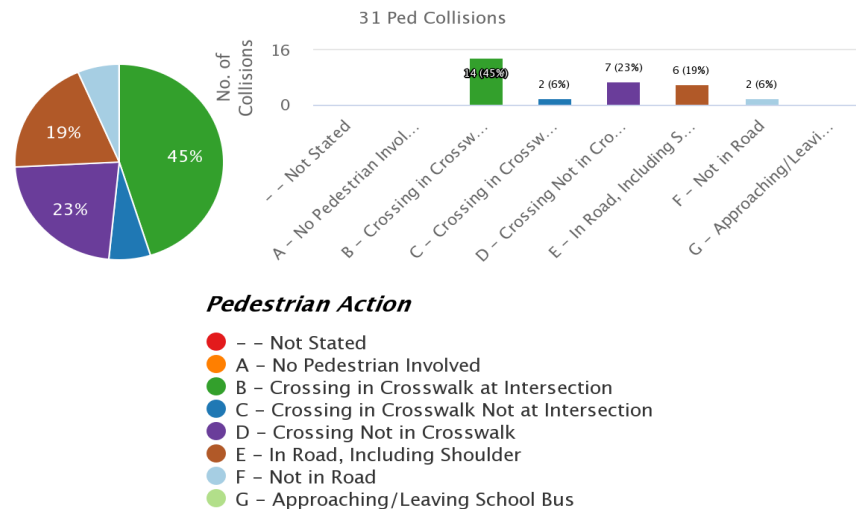
Suisun City CSSA

Number of Pedestrian Collisions by Pedestrian Action
(from TIMS)

5-year period:
January 2014 through 2018

Pedestrian Action	Count	%
B - Crossing in Crosswalk at Intersection	14	45.16%
C - Crossing in Crosswalk Not at Intersection	2	6.45%
D - Crossing Not in Crosswalk	7	22.58%
E - In Road, Including Shoulder	6	19.35%
F - Not in Road	2	6.45%

Number of Ped Collisions by Pedestrian Action



Complete Streets Safety Assessment Program

Suisun City CSSA

Number of Bicycle Collisions by Collision Severity
(from TIMS)

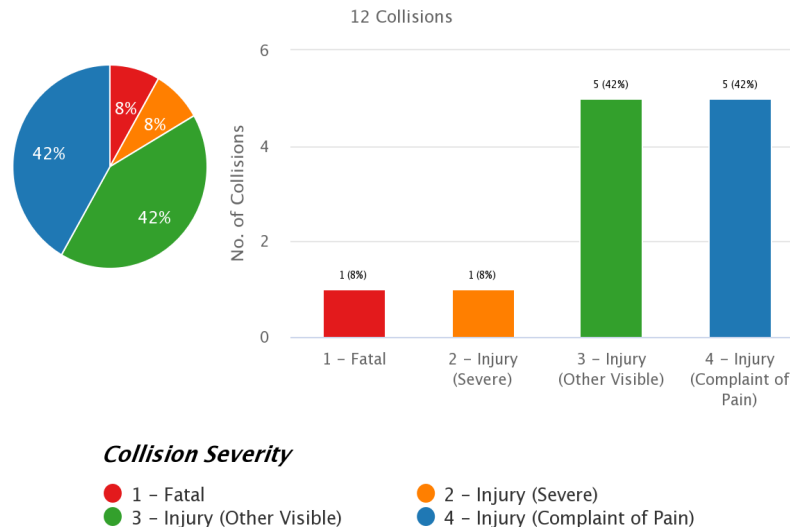
5-year period:

January 2014 through 2018

12 Collisions:

- 1 (8%) Fatal
- 1 (8%) Severe Injury
- 5 (42%) Other Visible Injury
- 5 (42%) Complaint of Pain Injury

Number of Collisions by Collision Severity



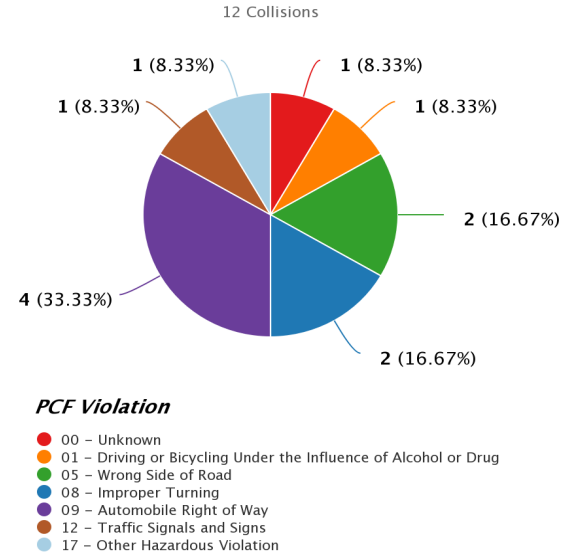
Complete Streets Safety Assessment Program

Suisun City CSSA

Number of Bicycle Collisions by
Primary Collision Factor (PCF) Violation
 (from TIMS)

PCF Violation	Count	%
00 - Unknown	1	8.33%
01 - Driving or Bicycling Under the Influence of Alcohol or Drug	1	8.33%
05 - Wrong Side of Road	2	16.67%
08 - Improper Turning	2	16.67%
09 - Automobile Right of Way	4	33.33%
12 - Traffic Signals and Signs	1	8.33%
17 - Other Hazardous Violation	1	8.33%

Number of Collisions by PCF Violation



Complete Streets Safety Assessment Program

Site Visit Day

SafeTREC Experts, City Staff, and other Stakeholders (County, Caltrans, School District)

- Introductory Meeting
- Walking Audit
- Exit Meeting



Complete Streets Safety Assessment Program

Field Audit



Complete Streets Safety Assessment Program

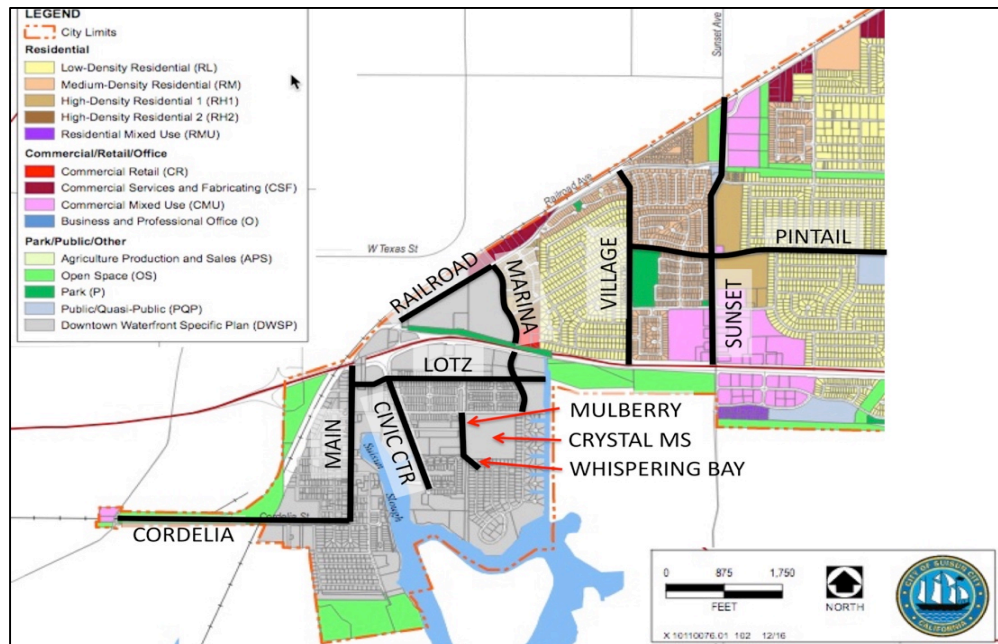
Field Audit



Complete Streets Safety Assessment Program

Suisun City CSSA

Map of Focus Areas



Complete Streets Safety Assessment Program

Suisun City CSSA

City staff requested 10 Focus Areas

#	Focal Area Location	Issues
South of Highway 12		
1*	Main St, Cordelia St – Hwy 12	Speeding, comfortable crossings, revitalization
2*	Main St at train station plaza	Pedestrians crossing east of Lotz Way signal
3*	Cordelia St, City limit – Main St	Speeding, crosswalks, “western gateway” feature
4*	Lotz Way, Main St – Marina Blvd	Speeding, crossings, walkability, business vitality
5*	Marina Blvd, Hwy 12 – Driftwood Dr	Crosswalks at Lotz Way, Driftwood Dr
6*	School crosswalks on Whispering Bay Lane	Bus driveway, path at bend, Francisco intersection
North of Highway 12		
7*	Marina Blvd north of Highway 12	Speeding, crosswalks
8	Village Dr	Crosswalks at Pintail Dr, Nelson Community Center
9	Sunset Ave	Bike lanes, crosswalks
10	“Triangle parcel”, including Railroad Avenue * west of Marina Boulevard	Development site, internal and through connectivity

Complete Streets Safety Assessment Program

Suisun City CSSA

General City-wide Suggestions

- Raised median at uncontrolled locations
- Raised crosswalks
- Corner curb extensions at selected crosswalks
- Painted safety zone / interim curb extension
- Center islands on side streets
- Bicycle and motorcycle detection
- Bicycle guide signage
- Prohibit parking
- Bike corrals (in-street racks)
- Advance limit lines in advance of controlled crosswalks

Complete Streets Safety Assessment Program

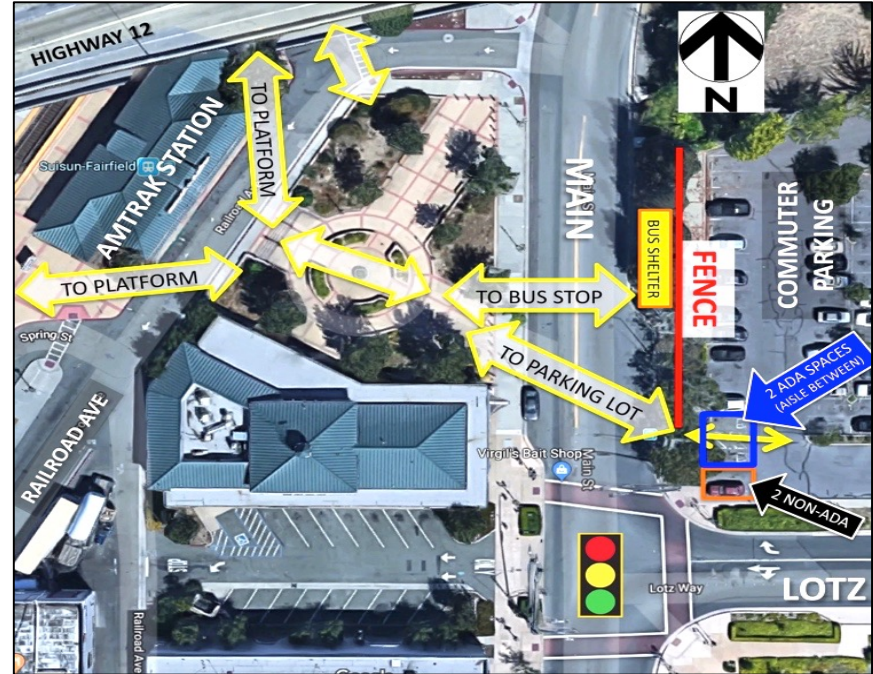
Focus Area:

Main Street at train station plaza
and commuter parking lot

Issue:

Pedestrians crossing east of Lotz Way signal

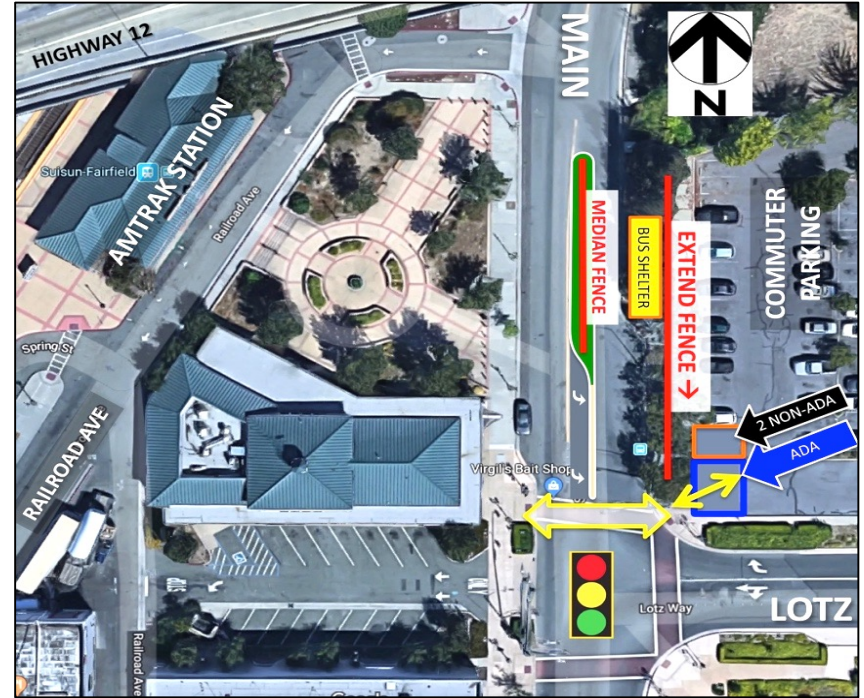
- Amtrak's Suisun-Fairfield commuter rail station
- Commuter parking lot



Complete Streets Safety Assessment Program

Suggestions

- Exchange the locations of the ADA and the two non-ADA stalls
- Place the ADA stalls closer to Lotz Way
- Extend the parking lot fence southward two parking stall widths
- Add a raised median, with a fence to prevent pedestrians from crossing



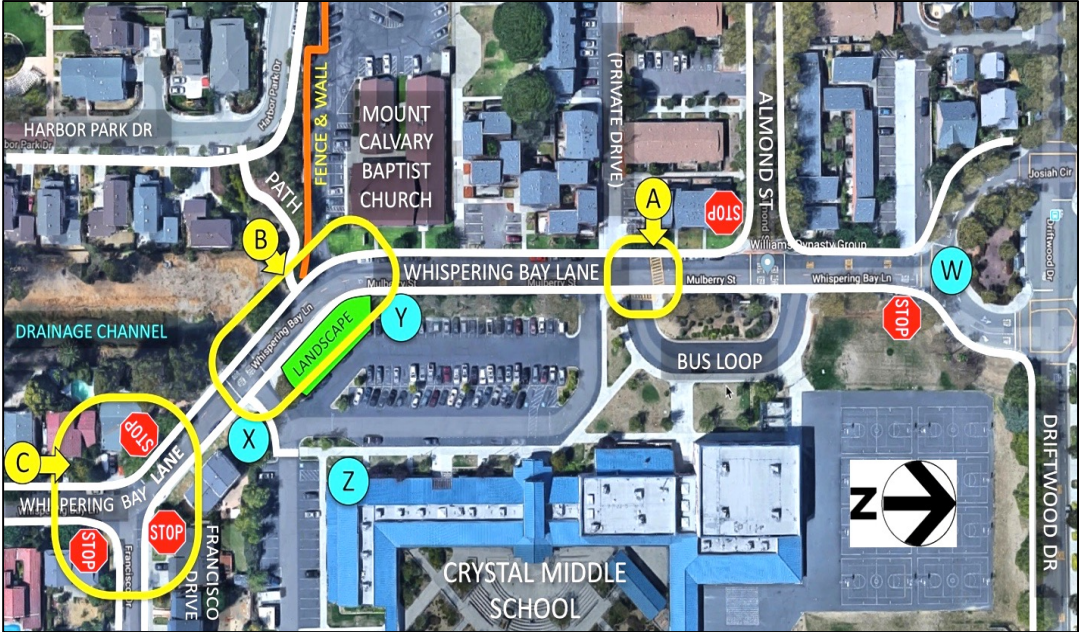
Complete Streets Safety Assessment Program

Focus Area:

School crosswalks on
Whispering Bay Lane

Issue

School crossings at:
areas A, B, and C



Complete Streets Safety Assessment Program

Suggestions

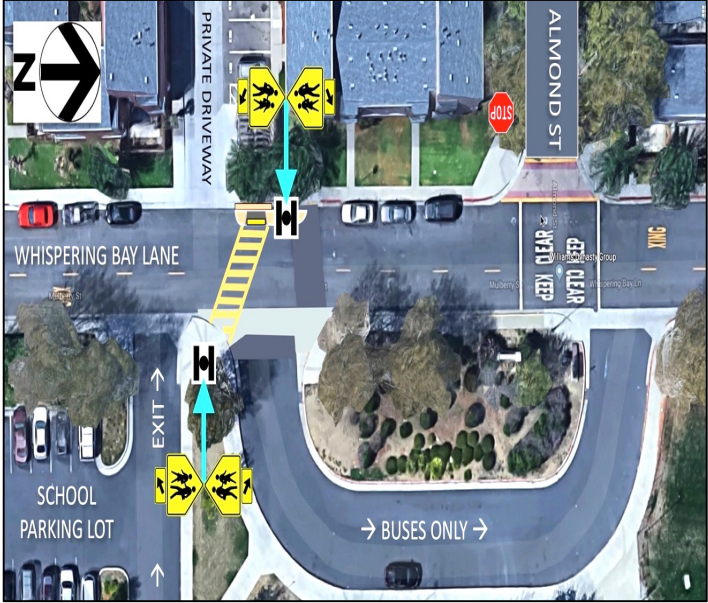
Area C



Area B



Area A



Complete Streets Safety Assessment Program

- Accepting applications for current grant Cycle
October 01, 2019 - September 30, 2020
- 12 CSSAs available

Email: afsaneh.yavari@berkeley.edu
safetrec@berkeley.edu

Web: <https://safetrec.berkeley.edu/>