



I-880 Construction Notice

Intermittent Nighttime Ramp Closures starting December 4th

Construction activity for the I-880 Express Lanes will require intermittent, temporary, nighttime closures of:

- Fremont Blvd. North-Bound On-Ramp & Off-Ramp
- North Bound Truck Scale Facility North-Bound On-Ramp & Off-Ramp
- E. Warren Ave. North-Bound On-Ramp & Off-Ramp
- Dixon Landing Rd. North-Bound On-Ramp & Off-Ramp
- California Cr. North-Bound On-Ramp



The intermittent ramp closures will begin the night of December 4th and occur for approximately three weeks. At no time will adjacent ramps be closed simultaneously. Please follow posted detours. **See route maps below.**

The ramp closures will allow construction crews to install conduit for the future communications network. The ramps must be closed to provide a safe and efficient working environment for field crews.

See detour route maps below.

- When traveling near the construction site:
 - ✓ Always use caution.
 - ✓
 - ✓ Be prepared to reduce speeds.
 - ✓ Follow posted detour signs.

Construction is a dynamic process and information is subject to change without notice. Work is subject to weather conditions.



Contact Us

415-778-6757

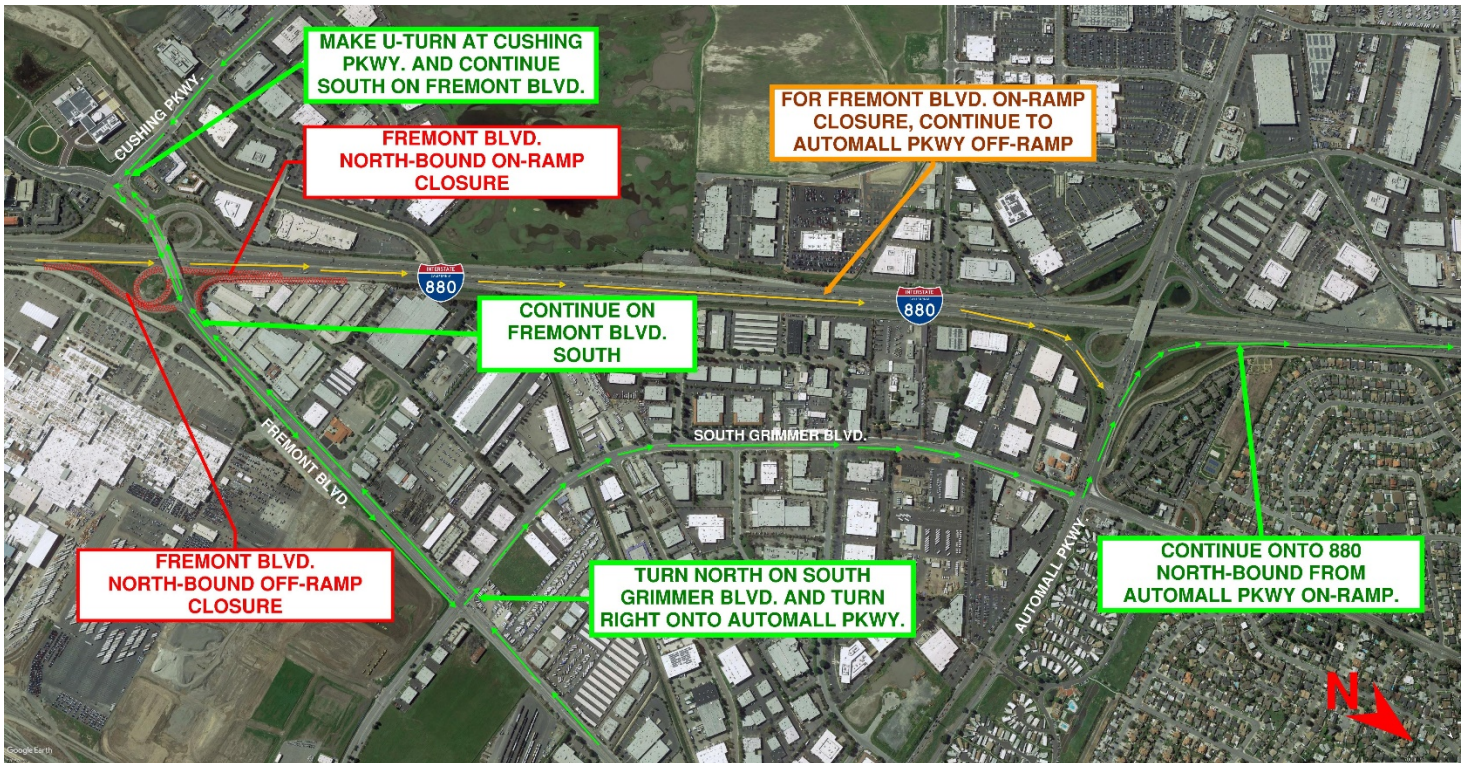
info@bayareaexpresslanes.org

Expresslanes.511.org

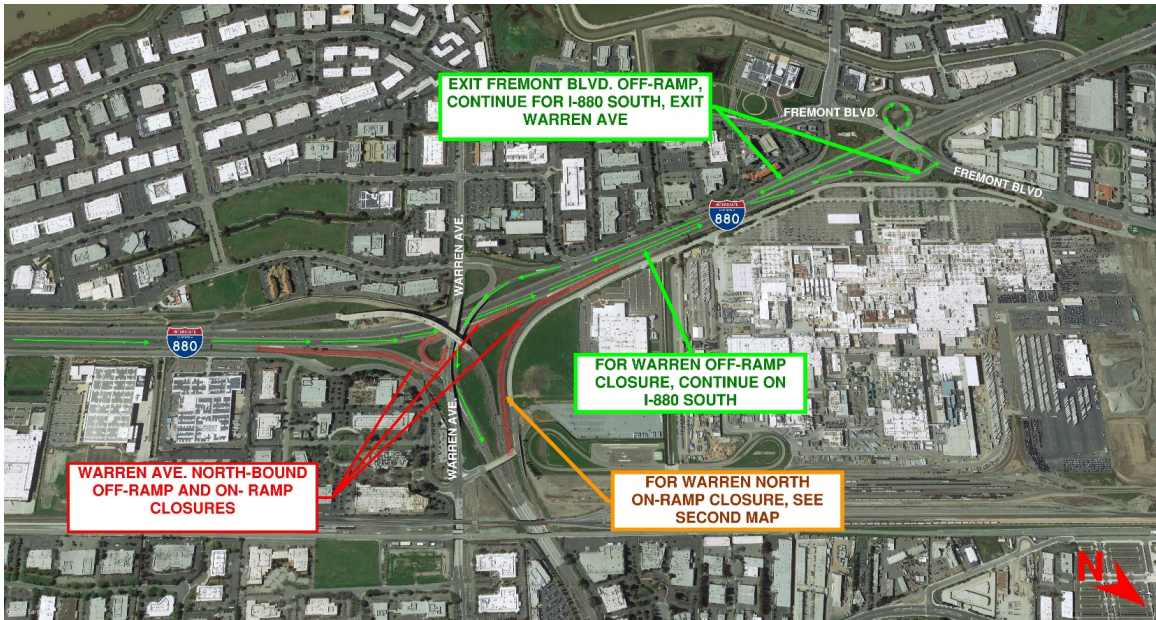
twitter.com/511SFBay

facebook.com/511SFBay

Fremont Blvd. North-Bound On-Ramp & Off-Ramp



E. Warren Ave. North-Bound On-Ramp & Off-Ramp



North Bound Truck Scale Facility North-Bound On-Ramp & Off-Ramp



Dixon Landing Rd. North-Bound On-Ramp & Off-Ramp and California Cr. North-Bound On-Ramp

