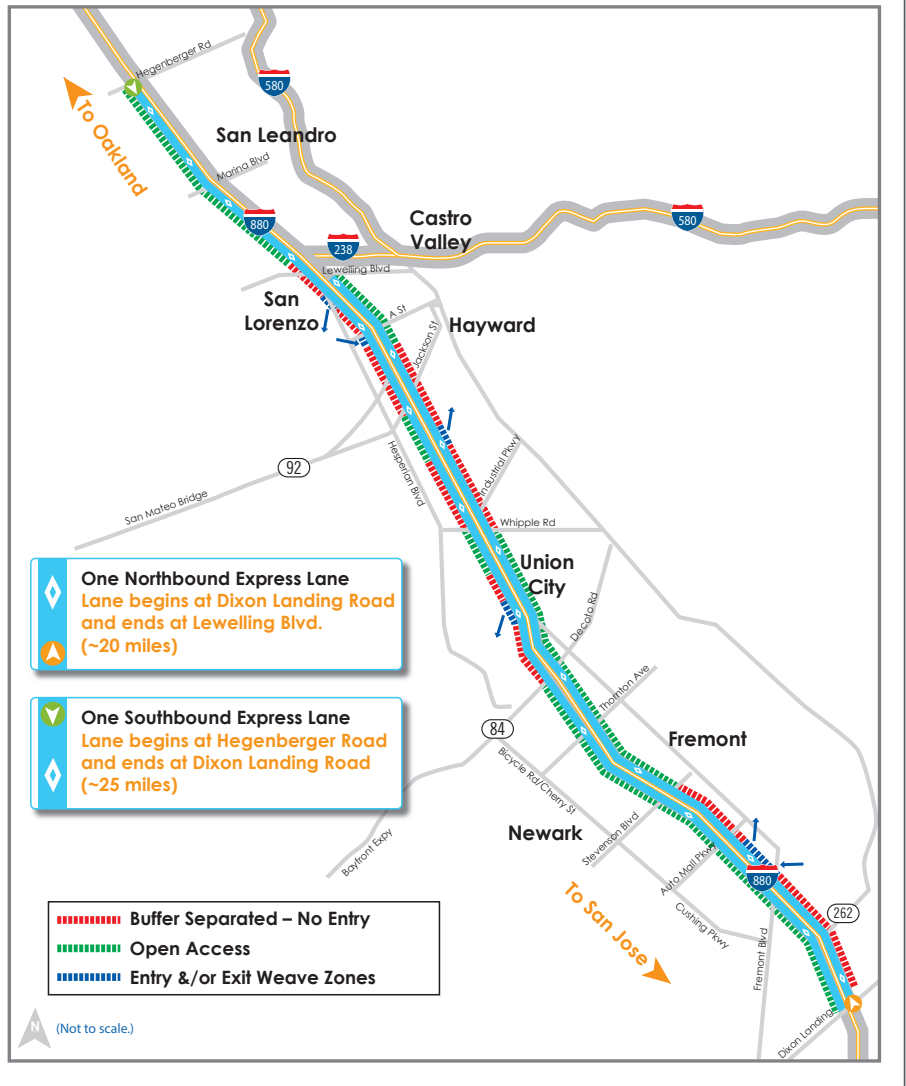


I-880 PROJECT DETAIL MAP



PROJECT DESCRIPTION

The Metropolitan Transportation Commission (MTC) is converting the existing I-880 HOV lanes that run from Hegenberger Road to Dixon Landing Road in the southbound direction and from Dixon Landing Road to Lewelling Boulevard in the northbound direction to express lanes. The conversion involves lane striping and installing sign structures, signs, tolling equipment, traffic monitoring video cameras, a data communications network, lighting, median barrier replacement and CHP observation areas. The highway is also being widened in three locations to accommodate merge lanes into and out of the future express lanes.

I-880 PROJECT PARTNERS



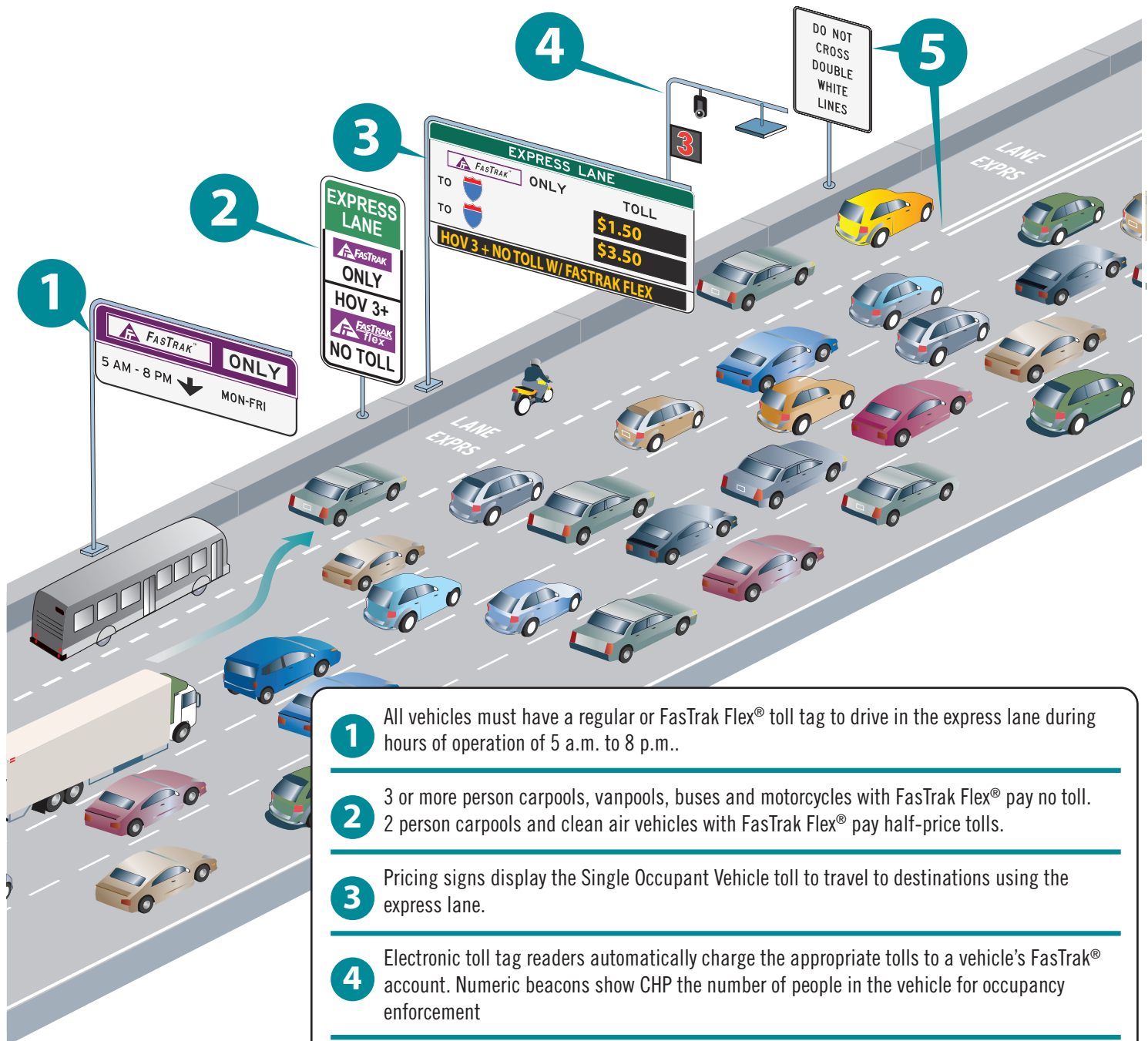
PROPOSED: Subject to BAIFA Toll Ordinance Approval

WHAT ARE EXPRESS LANES?

Express lanes are specially designated highway lanes that allow vehicles to pay full tolls, partial tolls, or no tolls depending on the vehicle occupancy or type. Tolls increase as traffic increases and decrease as traffic decreases.

HOW THE I-880 EXPRESS LANES WORK

For more information about Bay Area Express Lanes, visit expresslanes.511.org.



- 1** All vehicles must have a regular or FasTrak Flex[®] toll tag to drive in the express lane during hours of operation of 5 a.m. to 8 p.m..
- 2** 3 or more person carpools, vanpools, buses and motorcycles with FasTrak Flex[®] pay no toll. 2 person carpools and clean air vehicles with FasTrak Flex[®] pay half-price tolls.
- 3** Pricing signs display the Single Occupant Vehicle toll to travel to destinations using the express lane.
- 4** Electronic toll tag readers automatically charge the appropriate tolls to a vehicle's FasTrak[®] account. Numeric beacons show CHP the number of people in the vehicle for occupancy enforcement
- 5** The I-880 Express Lanes will have a mix of open and restricted access. Dashed lines show where it is OK to enter and exit the express lanes, while double white lines show where it is illegal.

PROPOSED: Subject to BAIFA Toll Ordinance Approval

I-880 EXPRESS LANE OPERATIONS

- Hours of operation: 5 a.m. to 8 p.m. Monday through Friday
- All vehicles need FasTrak® or FasTrak Flex® to use the lanes
 - 3+ person carpools, vanpools, motorcycles and buses pay no toll with FasTrak Flex®
 - 2-person carpools can choose to pay half-price tolls with FasTrak Flex®
 - Eligible Clean Air Vehicles can choose to pay half-price tolls with a CAV FasTrak Flex®
 - Solo drivers can choose to pay full tolls with FasTrak® or FasTrak Flex®
- The minimum toll is \$0.50 per toll zone; the maximum toll is determined by traffic congestion
- The lanes will be a mix of open and restricted access; it is illegal to cross double white lines

FasTrak Flex®

Carpools, vanpools and other eligible vehicles must use FasTrak Flex® toll tags to travel toll-free in express lanes. Eligible clean air vehicle drivers must apply for a “Clean Air Vehicle” FasTrak Flex® toll tag. Before driving, move the switch to show the number of people in the vehicle. Solo drivers can use regular FasTrak® toll tags or FasTrak Flex® toll tags set in the “1” position. Learn more at bayareafastrak.org.



WHY EXPRESS LANES?

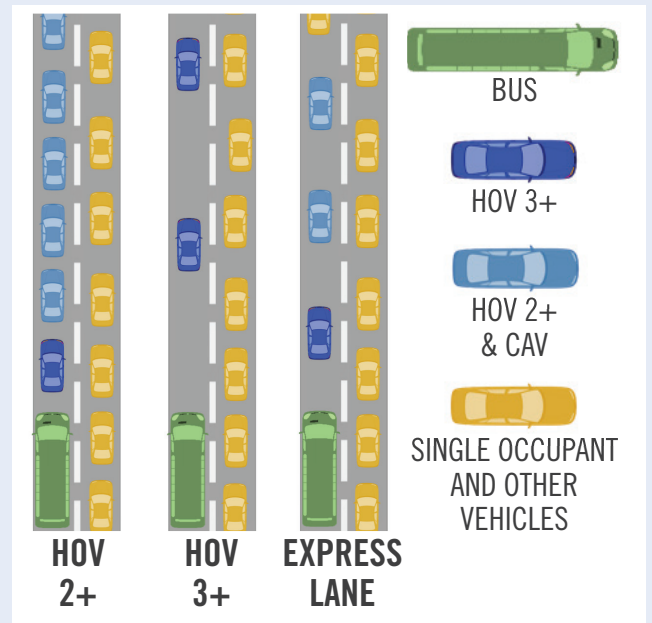
Between 2015 and 2040, the Bay Area's population is expected to grow about 25% and employment about 17%.^{*} Funding and land to expand the transportation network are limited, however, so the region needs to move more people on the existing network. Today, Bay Area carpool lanes, including I-880's lanes, rarely provide the speedier trips that carpools and buses deserve. Express lanes can decrease carpool lane congestion by allowing 3+ carpools to travel toll-free and encouraging 2-person carpools and clean air vehicles with partial tolls. Raising the occupancy requirement to 3+ without tolling would likely lead to unused carpool lane capacity and more crowded general purpose lanes. Tolls are set to ensure lane space is well used while providing faster lane speeds. Access restrictions also help the lanes move faster by preventing merging in congested areas.

EXPRESS LANE BENEFITS

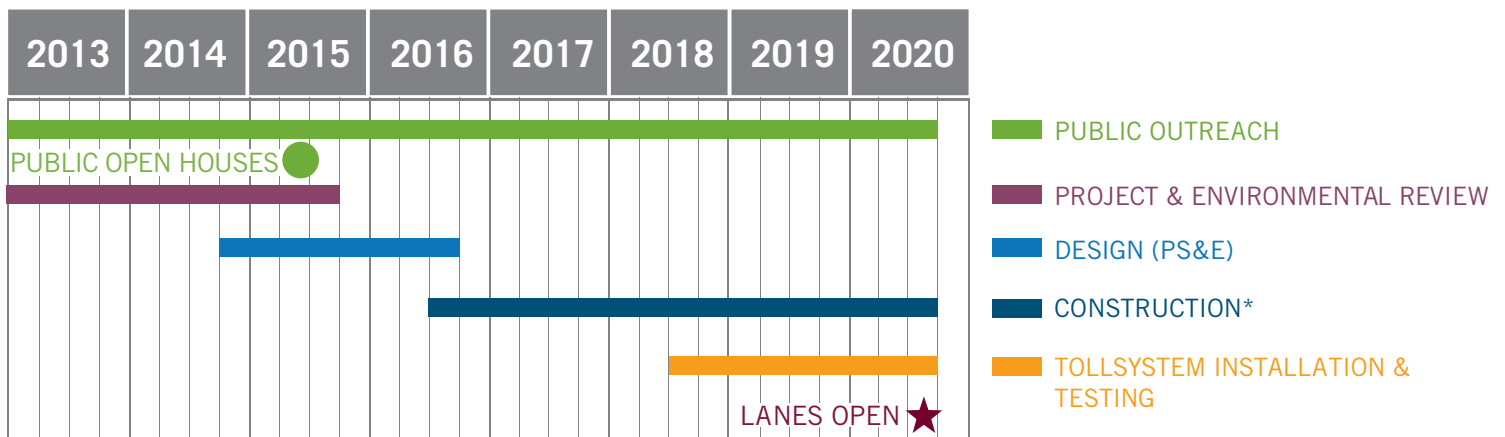
- Provides a more reliable trip
- Ensures use of all lane capacity
- Reduces carpool cheating
- Provides tools to manage traffic flow
- Provides more vehicles the opportunity to use the lanes
- Rewards buses, vanpools, motorcycles, carpools and clean air vehicles
- Grows the carpool lane network
- Funds operations and maintenance with user fees

^{*} Data Source: Plan Bay Area 2040

HOW EXPRESS LANES HELP:



EXPRESS LANE PROJECT SCHEDULE



*Includes I-880 median barrier improvements.

PROJECT COST

The total cost for this I-880 project is approximately \$139 million, which includes planning, design, construction, utilities, and toll system integration.



expresslanes.511.org
info@BayAreaExpressLanes.org • (415) 778-6655